



*add new tech to your business!*



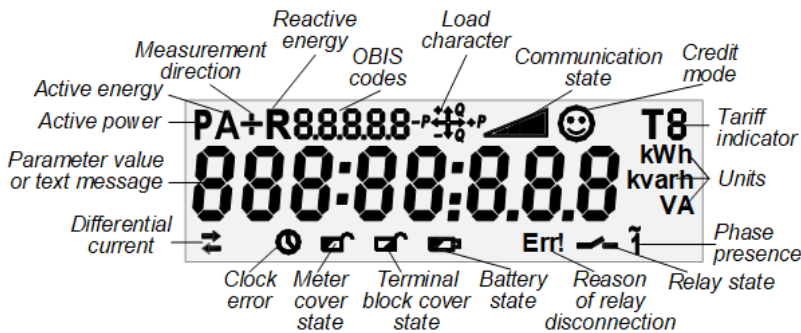
## AD11A.1-14-1

### MULTI-FUNCTION & MULTI-TARIFF SINGLE-PHASE ELECTRONIC METERS DESIGNED FOR USE IN AMI/AMR SYSTEM

#### OVERALL VIEW



#### DISPLAY INDICATIONS



<b>KWh</b> <b>KVArh</b>	Active energy ( <i>export/import</i> ) Reactive energy ( <i>4 quadrants</i> )
<b>V</b> <b>A</b>	Measured quantities
<b>THD</b>	Calculation of total harmonic distortion factor
<b>T1-T6</b>	Multirate registration
	Built-in clock
	Event Log
	Load profile
<b>I1≠I2</b>	Differential current detection
<b>IP54</b>	Protection level
	Built-in relay
	Backup power supply
	Standard data model, open protocols
	Optical port
	Sensor of meter cover opening
	Sensor of terminal block cover opening
	Magnetic field sensor
	RS-485 communication interface
<b>PLC</b>	PLC universal platform
	Authentication & Encryption

**DLMS/COSEM SUPPORT**

- Standard data model
- Standard communication protocols
- Interoperability

**BUILT-IN CLOCK**

- Real Time Clock, accuracy 0.5 s.
- IEC 62052-21 standard compliant
- External synchronization
- Daylight saving time (DST) support

**MEASURED QUANTITIES**

- Active energy, class B (1), export/import
- Reactive energy, class 2, 4 quadrants
- Power, Max Demand
  - integration period:
    - 15', 30', 60', 1 day
    - average interval: day, month
- Phase voltage/current, instantaneous value, RMS, neutral current, difference between phase and neutral currents

**METERING DATA**

- Actual meter readings
- Periodic meter readings: daily, monthly
- Interval meter readings: 5', 10', 15', 20', 30', 60'
- Timestamp

**DATA STORAGE**

- Non-volatile memory
- Storage capacity depends on data type and number of parameters and can be expanded for one type of data on the expense of another
- Up to 3 interval profiles and 1 billing profile. For example:
  - *15 minutes interval profile:* 6 parameters for about 63 days
  - *hourly interval profile:* 6 parameters for about 13 days
  - *monthly billing profile:* 6 parameters for about 110 months

**MULTI-RATE METERING**

- Up to 6 tariff registers
- Up to 12 changeovers per day
- Tariff indicator is displayed on LCD and transmitted to an external system
- Active and passive tariff plans, configurable activation time of the passive tariff plan

**CALENDAR**

- Up to 12 seasons per year
- Up to 7 daily profiles per week
- Up to 30 special days per year
- Support of movable holidays

**TEST OUTPUTS**

- Outputs: 2 optical outputs (LEDs), optical port
- Parameters under control: active energy, reactive energy

**METER SELF-CONTROL**

- Built-in test for continuous self-control
- Quick response on severe error
- Meter state events registering

**EVENTS & ALARMS HANDLING**

- Continuous control of current state of meter functional nodes and alarms/events, timestamps
- Standard set of events processing including: registration in the special logs and registers, event report sending, states displaying, load switching off on special cases
- Different types of event logs

**BUILT-IN DISPLAY**

- LCD, 8 digits, configurable decimal place (up to 3 digits)
- Special symbols, data identification according to IEC 62056-61 (OBIS)
- Metering data and specified messages displaying
- Service/client lists of parameters
- Manual/automatic modes of scrolling
- Display self-testing
- Configurable backlight mode

**LOAD CONTROL**

- Built-in relay (80A)
- Control modes:
  - remote (by command)
  - local (by condition)
  - manual (by push button)
- Continuous relay state control
- Relay status displaying
- Load switch events registering

**ELECTRICAL ENERGY QUALITY CONTROL**

- Quality indexes:
  - average voltage
  - voltage sags and swells
  - outages
  - network frequency
  - THD for voltage/current harmonics
- Remote or local configuring of parameters thresholds
- Quality control events registering

**THRESHOLDS MANAGEMENT**

- Configurable thresholds values
- Possibility to disconnect consumer from the network, when a threshold is crossed

**FRAUD & THEFT PROTECTION**

- Continuous monitoring;
- Fraud types under control:
  - meter/terminal block cover opening
  - inadmissible differential current
  - strong external magnetic field
- Hall sensor for magnetic field detection
- Tamper detection: shunt in the phase circuit and transformer in the neutral
- Protective seals
- Fraud events registering

**INFORMATION SECURITY**

- Communication encryption (AES-GCM-128 security suite)
- Data access according to stated rights
- Firmware protection
- Security events registering

**DATA TRANSMISSION**

- Data transmission on demand or by schedule
- Request types:
  - Data Concentrator request (via communication channel)
  - Hand Held Unit request (via optical port)

**POWER LINE COMMUNICATION (PLC)**

- Built-in PLC modem
- G3-PLC (ITU-T G.9903) / PRIME (ITU-T G.9904, PRIME specifications v.1.3.6 and v.1.4) standard compliant;
- Switching between G3-PLC and PRIME is performed by changing the meter firmware.
- PLC features:
  - ✓ CENELEC A band
  - ✓ FCC band
  - ✓ EMC standards compliance
  - ✓ Auto-discovery
  - ✓ Repeating

**RS-485 COMMUNICATION INTERFACE**

- Built-in RS-485 interface:
  - provides a link between the meter and an extension communication module via mini USB port.
  - ensures the power supply of communication module
  - provides a link between the meter and other devices via WAGO connectors
  - baud rate - up to 19 200 bps.

**OPTICAL PORT**

- IEC 62056-21 standard compliant
- Data transmission rate up to 38 400 bps
- Possibility of local data exchange and meter parameterization

**METER PARAMETERIZATION**

- Remote (via communication channel) or local (via optical port)
- Assignment of the access rights from HES
- Parameterization events registering

**SOFTWARE UPDATE**

- Remote (via communication channel) or local (via optical port)
- Software update events registering

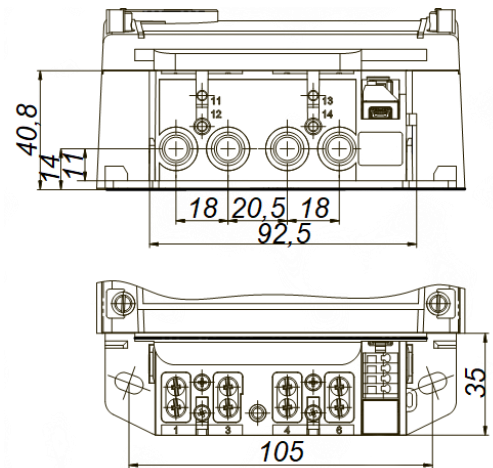
**BACKUP POWER SUPPLY**

- Battery for meter backup supply when the power is off
- Battery lifetime - not less than 20 years

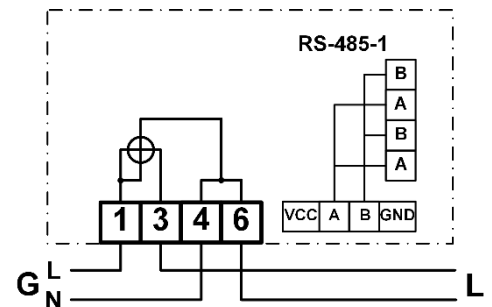
## TECHINICAL SPECIFICATIONS

<b>Accuracy class:</b>	
- Active energy	B (1)
- Reactive energy	2
<b>Reference current, Iref</b>	5 A
<b>Maximum current, I<sub>max</sub></b>	80 A
<b>Minimum current</b>	0.05 Iref
<b>Starting current:</b>	
- Active energy	0.004 Iref
- Reactive energy	0.005 Iref
<b>Reference voltage, U<sub>n</sub></b>	230 V
<b>Voltage range</b>	from 0.7 U <sub>n</sub> to 1.2 U <sub>n</sub>
<b>Reference frequency</b>	50 Hz
<b>Meter constant:</b>	
- Active energy	1 000 imp/kWh
- Reactive energy	1 000 imp/kvarh
<b>Temperature range</b>	from -40°C to +70°C
<b>Internal clock</b>	quartz crystal 32 kHz
<b>Clock accuracy (at 25°C) (IEC 62052-21)</b>	≤0.5 s / 24 h
<b>PLC raw data rate (with convolutional coding):</b>	
- PRIME v1.3.6, CENELEC A band 3-95 kHz	21.4-64.3 kbps
- PRIME v1.4 for each of 1, 3-8 channel in the band 3 kHz up to 500 kHz	5.4-64.3 kbps
- G3-PLC CENELEC A band (35-90 kHz)	up to 44 kbps
- G3-PLC FCC band (154-487 kHz)	up to 230 kbps
<b>Inherent consumption of current circuit, not more (IEC 62053-61)</b>	1 VA
<b>Inherent consumption of voltage circuit, active/total, per phase, not more (IEC 62053-61)</b>	2 W / 10 VA
<b>Insulation strength (IEC 61010-1-90)</b>	4 kV, 50 Hz, 1 min
<b>Shock voltage (IEC 60060-1)</b>	12 kV, 1.2/50 μs
<b>Electrostatic discharge (IEC 61000-4-2)</b>	15 kV
<b>High frequency radiant field (IEC 61000-4-3)</b>	10 V/m
<b>High frequency interferences (IEC 61000-4-4)</b>	4 kV
<b>Surge immunity test (IEC 61000-4-5)</b>	6 kV
<b>IP rating</b>	IP54
<b>Mean total lifetime, not less</b>	20 years
<b>Dimensions, W x H x D</b>	127.5 x 213.5 x 62 mm

## TERMINAL BLOCK DIMENSIONS



## CONNECTION DIAGRAM (IEC)



## DESIGN FEATURES

### TERMINAL BLOCK

- DIN 43857 standard specifications
- Universal clamping type for terminals of current circuits: D = 8 mm

### HOUSING

- Light-tone non-flammable polycarbonate

### MOUNTING

- By 3 fixing points or on DIN rail (35 mm)

## CONTACT US



36 Dragomirna Str.  
Kishinev MD-2008  
Republic of Moldova

**Phone :** +373 (22) 930 012

**Fax :** +373 (22) 930 012

**E-mail :** [info@addgrup.com](mailto:info@addgrup.com)

**Web :** [www.addgrup.com](http://www.addgrup.com)