

add new tech to your business!

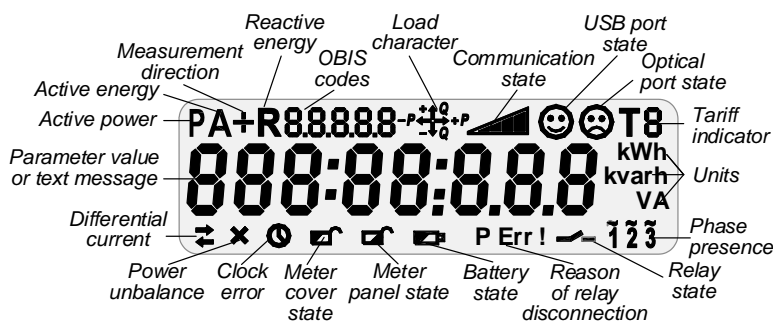
AD13B.1-3-1

**MULTI-FUNCTION & MULTI-TARIFF
THREE-PHASE ELECTRONIC METERS
DESIGNED FOR USE IN AMI /AMR SYSTEM**

OVERALL VIEW



DISPLAY INDICATIONS



| | |
|------------------------------|---|
| KWh KVArh VAh | Active energy (<i>export/import</i>) Reactive energy (<i>4 quadrants</i>) Apparent energy |
| V A | Measured quantities |
| T1-T6 | Multirate registration |
| THD | Calculation of total harmonic distortion factor |
| | Built-in clock |
| | Event Log |
| | Load profile |
| I1 ≠ I2 | Differential current detection |
| IP54 | Protection level |
| | Reserve power supply |
| | Standard data model, open protocols |
| | Optical port |
| | Disconnecting relay |
| | Sensor of meter cover opening |
| | Sensor of meter panel opening |
| | Magnetic field sensor |
| PLC | PLC universal platform |
| | Extension communication interface |

DLMS/COSEM SUPPORT

- Standard data model
- Standard communication protocols
- Interoperability

BUILT-IN CLOCK

- Real Time Clock (RTC), accuracy 0,5 s.
- IEC 62052-21 standard compliant
- External synchronization
- Sleep mode, battery
- Daylight saving time support

MEASURED QUANTITIES

- Active energy, class B, export/import
- Reactive energy, class 2, 4 quadrants
- Apparent energy
- Power, Max Demand
 - integration period: 15', 30', 60', 1 day,
 - average interval: day, month
- Phase voltage/current, instantaneous value, RMS, neutral current, difference between phase and neutral currents

METERING DATA

- Actual meter readings
- Periodic meter readings: daily, monthly
- Interval meter readings: 5', 10', 15', 20', 30', 60'
- Timestamp

DATA STORAGE

- Non-volatile memory
- Capacity depends on data type and number of parameters and can be expanded for one type of data on the expense of another
- Up to 3 interval profiles and 1 billing profile. For example:
 - *15 minutes interval profile*: 6 parameters for about 63 days
 - *hourly interval profile*: 6 parameters for about 13 days
 - *monthly billing profile*: 6 parameters for about 110 months

MULTI-RATE METERING

- Up to 6 tariff registers
- Up to 24 changeovers per day
- Tariff indicator is displayed on LCD and transmitted to an external system
- Active and passive tariff plans, configurable activation time of the passive tariff plan

CALENDAR

- Up to 12 seasons per year
- Up to 7 daily profiles per week
- Up to 30 special days per year
- Support of movable holidays

TEST OUTPUTS

- Outputs: LEDs, optical port
- Parameters under control: active energy, reactive energy

EVENTS & ALARMS HANDLING

- Continuous control of current state of meter functional nodes and alarms/events, timestamps
- Standard set of events processing including: registration in the special logs and registers, event report sending, states displaying, load switching off on special cases
- Different types of event logs

BUILT-IN DISPLAY

- LCD, 8 digits, configurable decimal place (up to 3 digits)
- Special symbols, data identification according to IEC 62056-61 (OBIS)
- Metering data and specified messages displaying
- Service/client lists of parameters
- Manual/automatic scrolling modes
- Display self-testing
- Configurable backlight mode
- Sleep mode

LOAD CONTROL

- Built-in relay (100 A)
- Control modes:
 - remote (by command)
 - local (by condition)
 - manual (by push button)
- Continuous relay state control
- Relay status displaying
- Events registering

ELECTRICAL ENERGY QUALITY CONTROL

- Quality indexes:
 - average voltage
 - voltage sags and swells
 - outages
 - network frequency
 - angles between phases
 - THD for voltage/current harmonics
- Remote or local configuring of parameters thresholds
- Events registering

THRESHOLDS MANAGEMENT

- Configurable thresholds values
- Possibility to disconnect consumer from the network, when a threshold is crossed
- Events registering

FRAUD & THEFT PROTECTION

- Continuous monitoring, including sleep mode time
- Fraud types under control:
 - meter cover and panel opening
 - inadmissible differential current
 - strong external magnetic field
- Hall sensor for magnetic field detection
- Shunts in phase and neutral circuits for tamper detection
- Events registering
- Possibility of sealing meter cover, panel and terminal block

SOFTWARE UPGRADE

- Remote or local software upgrade

METER PARAMETERIZATION

- Remote (via communication channel) or local (via optical port)
- Access rights assignment from HES
- Events registering

METER SELF-CONTROL

- Built-in test for continuous self-control
- Quick response on severe error
- Events registering

INFORMATION SECURITY

- Communication encryption (AES-GCM-128 security suite)
- Data access according to access rights
- Firmware protection
- Events registering

DATA TRANSMISSION

- Data transmission on demand or by schedule
- Request types:
 - Concentrator request (via communication channel)
 - Hand Held Unit request (via optical port)

POWER LINE COMMUNICATION (PLC)

- Built-in OFDM PLC modem
- OFDM (PRIME), ITU-T G.9904 standard compliant
- OFDM (G3-PLC), ITU-T G.9903 standard compliant
- PLC features:
 - CENELEC A Band
 - EMC standards compliance
 - Auto-discovery
 - Repeating

EXTENSION COMMUNICATION INTERFACE

- Built-in extension interface, which allows connection of various 3rd party USB adapters (up to 2) for:
 - *HAN communication*, e.g.: wireless M-Bus, RS-485 and/or
 - *WAN communication*, e.g.: 3GPP
- Control of USB power supply

OPTICAL PORT

- Local communication with meter
- IEC 62056-21 standard compliant
- Data transmission rate 115200 bps
- Restricted access owing to sealed meter cover

PUSH BUTTONS

- Client button on meter case for:
 - manual reconnection of customer's load
 - manual meter screens scrolling
 - viewing data on LCD when the power is off
- Service button under sealed meter cover. May be implemented for any service purposes according to customer requirements

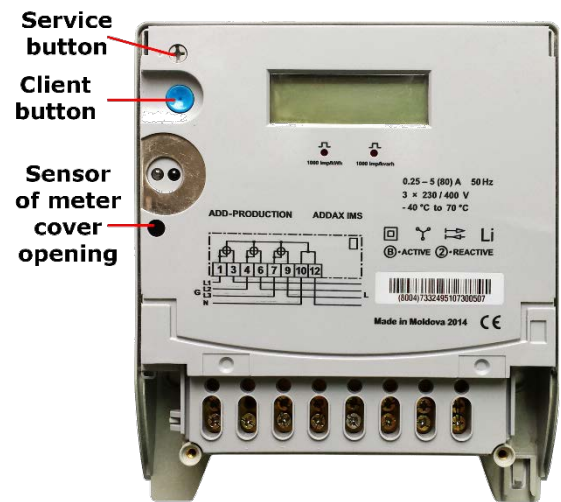
BACKUP POWER SUPPLY

- Battery for meter backup supply in sleep mode
- Lifetime - not less than 20 years

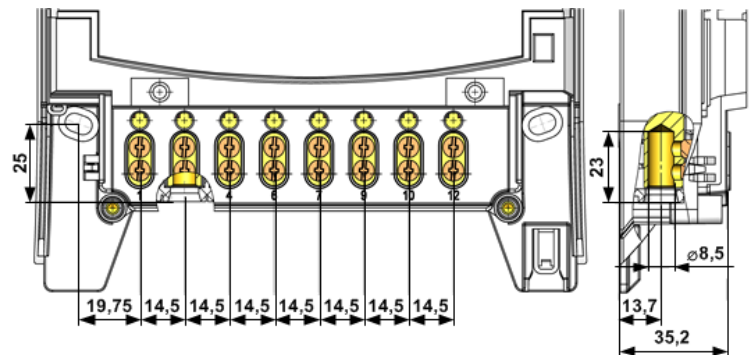
TECHNICAL SPECIFICATIONS

| | |
|--|---|
| Accuracy class: | |
| - Active energy | B |
| - Reactive energy | 2 |
| Reference current, I_{ref} | 5 A |
| Maximum current, I_{max} | 80 A |
| Minimum current | 0.05 I _{ref} |
| Starting current: | |
| - Active energy | 0.004 I _{ref} |
| - Reactive energy | 0.005 I _{ref} |
| Reference voltage, U_n | 3×230 V |
| Voltage range | 0.8 U _n ... 1.2 U _n |
| Reference frequency | 50 Hz |
| Meter constant: | |
| - Active energy | 1000 imp/kWh |
| - Reactive energy | 1000 imp/kvarh |
| Temperature range | -40°C ... +70°C |
| Clock accuracy (at 25°C) (IEC 62052-21) | ≤0.5 s /24 h |
| Data transmission rate via OFDM PLC (on physical layer, with coding): | |
| - PRIME | 21-64 kbps |
| - G3 | 5-33 kbps |
| Inherent consumption of current circuit, not more (IEC 62053-61) | 2.5 VA |
| Inherent consumption of voltage circuit, active/total, per phase, not more (when communication over USB is active) (IEC 62053-61) | 3 W / 10 VA |
| Insulation strength (IEC 61010-1-90) | 4 kV, 50 Hz, 1 min |
| Shock voltage (IEC 60060-1) | 12 kV, 1.2/50 μs |
| Electrostatic discharge (IEC 61000-4-2) | 15 kV |
| High frequency radiant field (IEC 61000-4-3) | 10 V/m |
| High frequency interferences (IEC 61000-4-4) | 4 kV |
| Surge immunity test (IEC 61000-4-5) | 6 kV |
| IP rating | IP54 |
| Mean total lifetime, not less | 20 years |
| Dimensions | 241.5x179x63.3 mm |

PUSH BUTTONS*

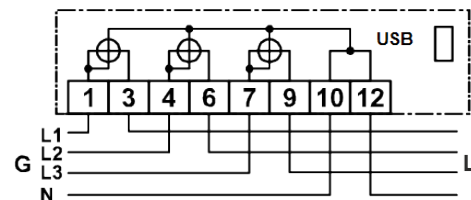


TERMINAL BLOCK DIMENSIONS*



* - meter cover is removed

CONNECTION DIAGRAM



DESIGN FEATURES

TERMINAL BLOCK

- DIN 43857 standard compliance
- Universal clamping type for terminals of current circuits:
D = 8 mm

MOUNTING

- By 3 fixing points
- Movable hanger

CONTACT US



36, Dragomirna str.,
Kishinev, MD-2008,
Republic of Moldova

Phone : +373 (0) 22 930012

Fax : +373 (0) 22 930012

